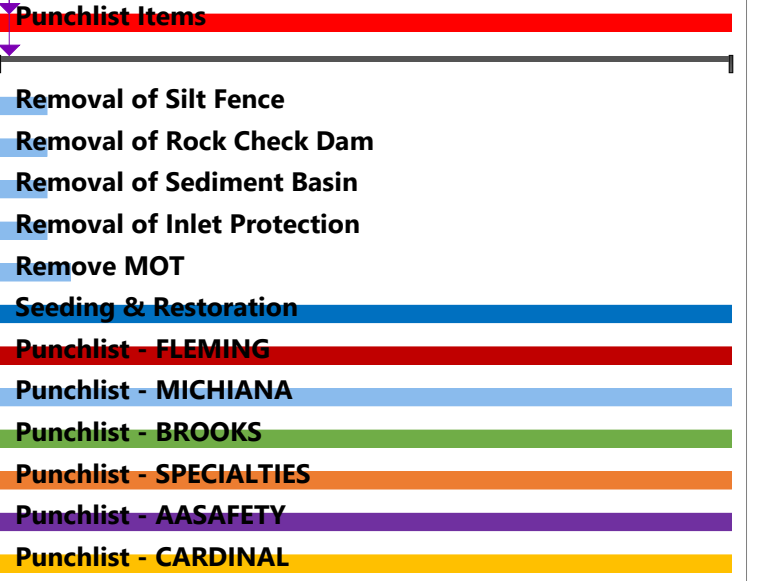
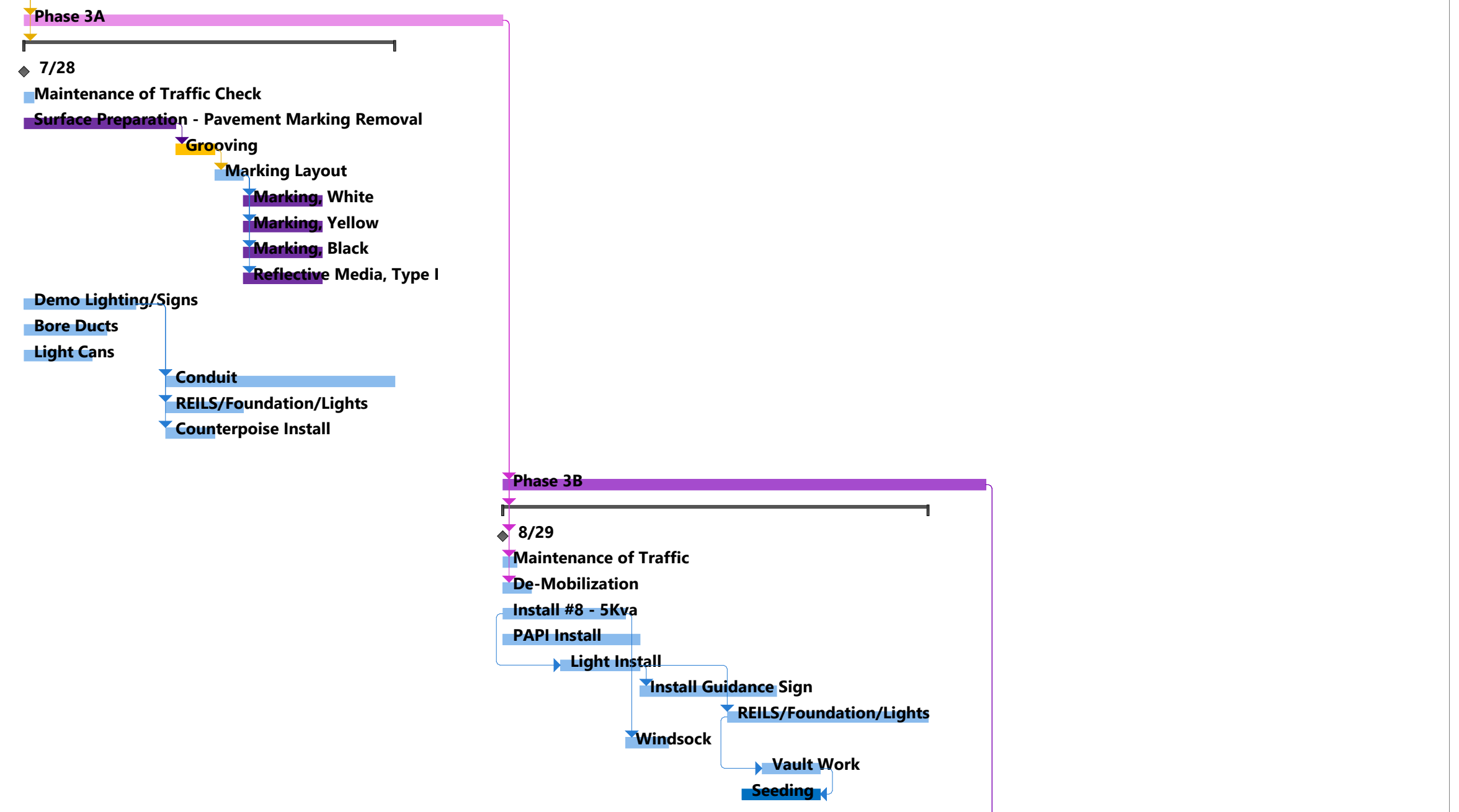
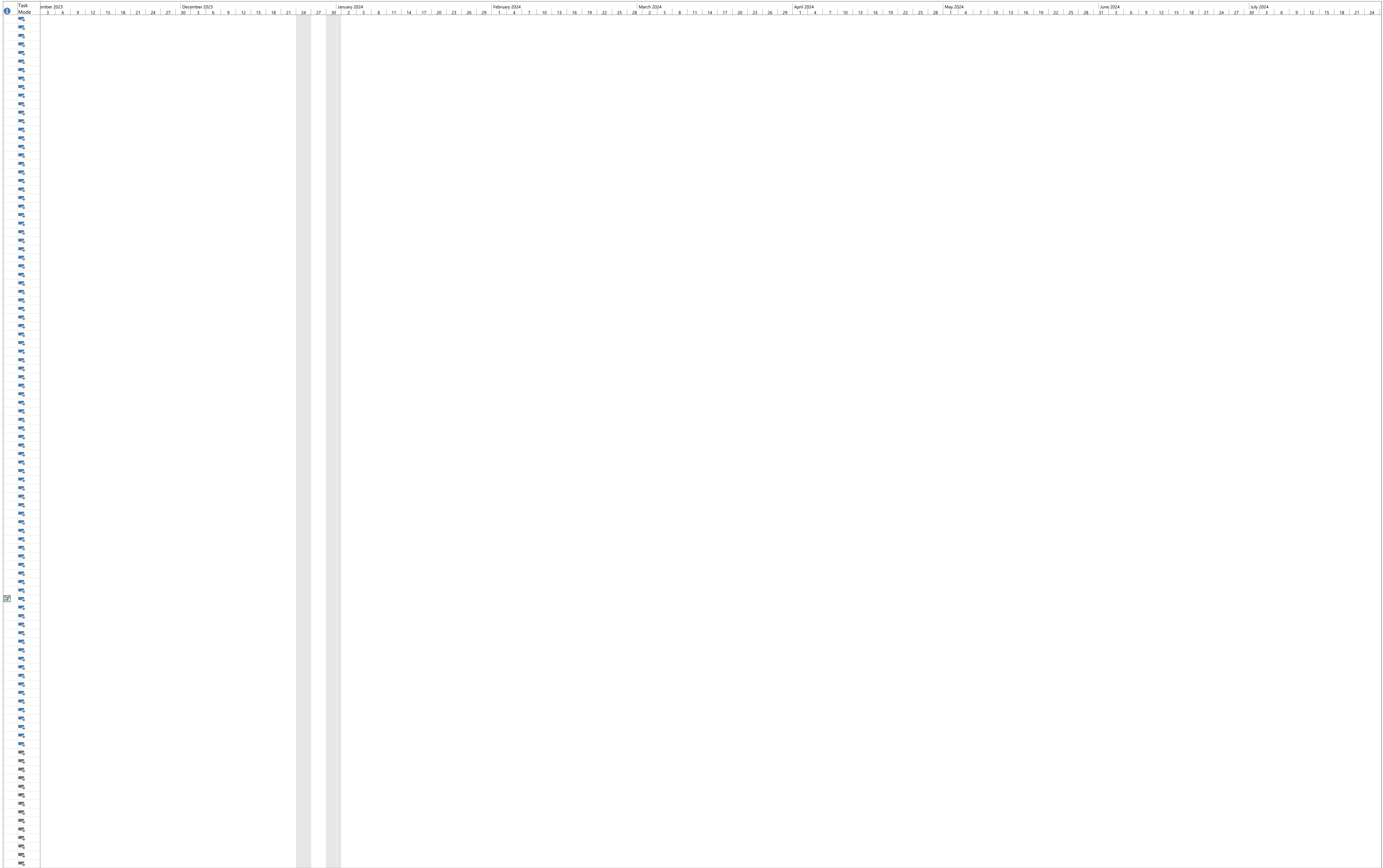


Project: Project Schedule Paving	Task	Milestone	Project Summary	Inactive Milestone	Manual Task	Manual Summary Rollup	Start-only	External Tasks	Deadline	Manual Progress
Date: Wed 5/10/23	Split	Summary	Inactive Task	Inactive Summary	Duration-only	Manual Summary	Finish-only	External Milestone	Progress	



Task Mode	Task Name	Contact	Working Days	Predecessors	Start	Finish
	Phase 3A	ALL	30 days	1	Sat 7/29/23	Tue 8/29/23
	<b>Expected Time to Complete</b>		<b>23 days</b>	<b>1</b>	<b>Fri 7/28/23</b>	<b>Tue 8/22/23</b>
	Production Staking by Contractor	BEARCH & FRANK	0 days		Fri 7/28/23	Fri 7/28/23
	Maintenance of Traffic Check	AASAFETY	1 day		Sat 7/29/23	Sat 7/29/23
	Surface Preparation - Pavement Marking Remove	AASAFETY	9 days		Sat 7/29/23	Mon 8/7/23
	Grooving	CARDINAL	3 days	107	Tue 8/8/23	Thu 8/10/23
	Marking Layout	BERTSCH & FRANK	2 days	108	Thu 8/10/23	Sat 8/12/23
	Marking, White	AASAFETY	5 days	109	Sat 8/12/23	Thu 8/17/23
	Marking, Yellow	AASAFETY	5 days	109	Sat 8/12/23	Thu 8/17/23
	Marking, Black	AASAFETY	5 days	109	Sat 8/12/23	Thu 8/17/23
	Reflective Media, Type I	AASAFETY	5 days	109	Sat 8/12/23	Thu 8/17/23
	Demo Lighting/Signs	MICHIANA	7 days		Sat 7/29/23	Sat 8/5/23
	Bore Ducts	MICHIANA	5 days		Sat 7/29/23	Thu 8/3/23
	Light Cans	MICHIANA	4 days		Sat 7/29/23	Wed 8/2/23
	Conduit	MICHIANA	15 days	114FS+1	Mon 8/7/23	Tue 8/22/23
	REILS/Foundation/Lights	MICHIANA	6 days	114FS+1	Mon 8/7/23	Sat 8/12/23
	Counterpoise Install	MICHIANA	4 days	114FS+1	Mon 8/7/23	Thu 8/10/23
	Phase 3B	ALL	30 days	103	Tue 8/29/23	Sat 9/30/23
	<b>Expected Time to Complete</b>		<b>26 days</b>	<b>103</b>	<b>Tue 8/29/23</b>	<b>Tue 9/26/23</b>
	Production Staking by Contractor	BERTSCH & FRANK	0 days	103	Tue 8/29/23	Tue 8/29/23
	Maintenance of Traffic	AASAFETY	1 day	103	Tue 8/29/23	Wed 8/30/23
	De-Mobilization	ALL	2 days	103	Tue 8/29/23	Thu 8/31/23
	Install #8 - 5Kva	MICHIANA	7 days		Tue 8/29/23	Wed 9/6/23
	PAPI Install	MICHIANA	8 days		Tue 8/29/23	Thu 9/7/23
	Light Install	MICHIANA	4 days	126SS+4	Sat 9/2/23	Thu 9/7/23
	Install Guidance Sign	MICHIANA	9 days	128	Thu 9/7/23	Sat 9/16/23
	REILS/Foundation/Lights	MICHIANA	13 days	128FS+5	Wed 9/13/23	Tue 9/26/23
	Windsock	MICHIANA	3 days	126	Wed 9/6/23	Sat 9/9/23
	Vault Work	MICHIANA	3 days	130SS+3	Fri 9/15/23	Tue 9/19/23
	Seeding	HARLOW	5 days	132FF	Thu 9/14/23	Tue 9/19/23
	<b>Punchlist Items</b>	<b>ALL</b>	<b>28 days</b>	<b>121</b>	<b>Sat 9/30/23</b>	<b>Mon 10/30/23</b>
	<b>Expected Time to Complete</b>		<b>28 days</b>	<b>121</b>	<b>Sat 9/30/23</b>	<b>Mon 10/30/23</b>
	Removal of Silt Fence	HARLOW	1 day		Sat 9/30/23	Mon 10/2/23
	Removal of Rock Check Dam	FLEMING	1 day		Sat 9/30/23	Mon 10/2/23
	Removal of Sediment Basin	FLEMING	1 day		Sat 9/30/23	Mon 10/2/23
	Removal of Inlet Protection	FLEMING	1 day		Sat 9/30/23	Mon 10/2/23
	Remove MOT	AASAFETY	2 days		Sat 9/30/23	Tue 10/3/23
	Seeding & Restoration	HARLOW	28 days		Sat 9/30/23	Mon 10/30/23
	Punchlist - FLEMING	FLEMING	28 days		Sat 9/30/23	Mon 10/30/23
	Punchlist - MICHIANA	MICHIANA	28 days		Sat 9/30/23	Mon 10/30/23
	Punchlist - BROOKS	BROOKS	28 days		Sat 9/30/23	Mon 10/30/23
	Punchlist - SPECIALTIES	SPECIALTIES	28 days		Sat 9/30/23	Mon 10/30/23
	Punchlist - AASAFETY	AASAFETY	28 days		Sat 9/30/23	Mon 10/30/23
	Punchlist - CARDINAL	CARDINAL	28 days		Sat 9/30/23	Mon 10/30/23





Project: Project Schedule Paving  
Date: Wed 5/10/23

Task Split	Milestone Summary	Project Summary Inactive Task	Inactive Milestone Inactive Summary	Manual Task Duration-only	Manual Summary Rollup Manual Summary	Start-only Finish-only	External Tasks External Milestone	Deadline Progress	Manual Progress
------------	-------------------	-------------------------------	-------------------------------------	---------------------------	--------------------------------------	------------------------	-----------------------------------	-------------------	-----------------

